



RENTAL BOOKLET

BOAT REQUIREMENTS

Boat w/o Motor:

- Cold water video

Any Lake / River Boat w/ Motor:

Visit boatus.org

- Select the State of Alaska
- Print a copy of the certificate & provide at time of reservation

FISHING & HUNTING LICENSES

We sell Alaska Fishing & Hunting Licenses and King Salmon Stamps.

CAMPERS & BOATS

The following are required to be completed a week PRIOR to pick up date:

- Light & hitch check
- Inspection & proper fit
- Hitching/unhitching vehicle from trailer knowledge check
- Travel trailers, motorhomes, and motorboats are not available past Labor Day weekend due to being winterized.

MOTORHOME & TRAILER STORAGE

The following are required before reservation can be confirmed:

- Proof of Ownership
- Completed Storage Contract, Autopay Contract, and Guidelines for Storage

ELIGIBILITY

- Eligibility requirements must be met for all rentals.
- All renters must be at least 18 years of age and have a valid DoD ID/CAC/VHIC.

CANCELLATIONS

- **8+ Days Prior:** 100% Refund.
- **7 – 3 Days Prior:** 75% refund.
- **2 Days Prior:** 50% refund.
- Modifying reservations will be refunded based on the above statements and are required to wait 48 hours before being allowed to reserve the same or like items. Subject to availability.
- Exceptions only allowed for emergency military duty or medical emergencies with a written note from the Commander or a doctor.

REACCESS REPLACING iSPORTSMAN

- A JBER Recreation Permit (RecAccess Permit) is required of anyone 16 years or older who will be recreating on JBER. Visitors under 16 must be signed in as guests and accompanied by an authorized permit holder at all times. Permits and a government-issued photo I.D. must be

RENTAL INFORMATION

- Rentals do not include loading and unloading, tie-down straps or rope. Tie down bars are provided on snow machine trailers.
- Fuel (gasoline, propane, etc.) is the responsibility of the renter.
- Customers are required to hitch/unhitch items.
- Rental fees are for time checked out, not time

PICK-UPS

- Customer signing for receipt of equipment will be responsible for condition of all items.
- All reserved items must be picked up no later than 2 hours before closing for proper check out procedures.
- Rentals must be picked up on assigned dates.

RENTAL RETURN

- All reserved items must be returned no later than 2 hours before close of business for proper check in procedures.
- Items cannot be left unattended or dropped off without proper check in from ODR staff.
- Rentals must be returned on assigned dates.

CLEANING & DAMAGES

- Cleaning Fee = Minimum 1 Day Rental
- Customer is responsible for cleaning rental equipment PRIOR to its return
- Customers are responsible for any lost or damaged items (including cost of labor for repairs), or cost of replacement.

Full payment and paperwork required for all reservation items.

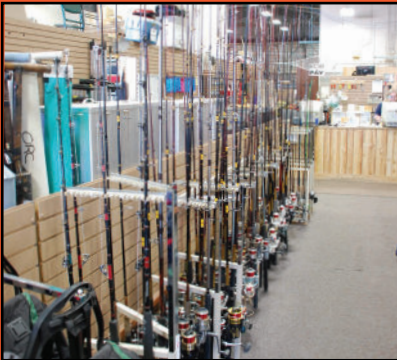
Submit forms to 773fss.fsw.oдр@us.af.mil

No reservations are final until all paperwork has been turned in to Outdoor Recreation.

All items are reservable.
 These items can be reserved 30 days in advance and subject to all reservable policies.

WATER EQUIPMENT

	DAILY MEMBER PRICE	WEEKEND RATE (Fri-Mon)	WEEK RATE (7 DAYS)	DAILY NON-MEMBER	WEEKEND RATE (Fri-Mon)	WEEK RATE
Boats						
18' w/90HP Jet (for approved rivers only).....	\$150	\$225	\$750	\$187.5	\$281.25	\$937.5
16' Lund w/15 HP Propeller (for lake only)	\$100	\$150	\$500	\$125	\$187.5	\$625
16' Workskiff w/40hp Propeller.....	\$150	\$225	\$750	\$187.5	\$281.25	\$937.5
Alwelds Boat.....	\$150	\$225	\$750	\$187.5	\$281.25	\$937.5
Workskiff.....	\$150	\$225	\$750	\$187.5	\$281.25	\$937.5
Canoe.....	\$40	\$60	\$200	\$50	\$75	\$250
Boating & Fishing Equipment						
Canoe Trailer Single.....	\$10	\$15	\$50	\$12.5	\$18.75	\$62.5
Canoe/Kayak Trailer (holds 6-8p).....	\$40	\$60	\$200	\$50	\$75	\$250
Open Top Kayak (lakes only).....	\$35	\$52.5	\$175	\$44	\$66	\$220
Dip Net	\$20	\$30	\$100	\$25	\$37.5	\$125
Rod & Hip boot combo.....	\$25	\$37.5	\$125	\$31.5	\$47.25	\$157.5
Hip Boots.....	\$15	\$22.5	\$75	\$19	\$28.5	\$95
Landing/Hooligan Net.....	\$5	\$7.5	\$25	\$6.5	\$9.75	\$32.5
Life Vests	\$5	\$7.5	\$25	\$6.5	\$9.75	\$32.5
Fishing poles (Fly)(Halibut)	\$10	\$15	\$50	\$12.5	\$18.75	\$62.5
Fishing poles (Salmon/Trout).....	\$15	\$22.5	\$75	\$19	\$28	\$95
Chest Waders	\$25	\$37.5	\$125	\$31.5	\$47.25	\$157.5



CAMPING

RVs & Campers

	DAILY MEMBER PRICE	WEEKEND RATE (Fri-Mon)	WEEK RATE (7 DAYS)	DAILY NON-MEMBER	WEEKEND RATE (Fri-Mon)	WEEK RATE
25' Four Wind Class C Motorhome (2 night minimum)	\$250	\$375	\$1250	\$312.5	\$468.75	\$1562.5
24' Cruise Lite	\$150	\$225	\$750	\$187.5	\$225	\$937.5
16' R-Pod	\$125	\$187.5	\$625	\$156.5	\$234.75	\$782.5
18' Springdale	\$140	\$210	\$700	\$177.5	\$266.25	\$887.5

Camping Equipment

2 Burner Camp Stove	\$7	\$10.5	\$35	\$9	\$13.5	\$45
Camp Chairs	\$5	\$7.5	\$25	\$6.5	\$9.75	\$32.5
Compass	\$2	\$3	\$10	\$2.5	\$3.75	12.5
Lantern LED	\$5	\$7.5	\$25	\$6.5	\$9.75	\$32.5
Cot.....	\$10	\$15	\$50	\$12.5	\$18.75	\$62.5

Back Packs

Baby Backpack	\$7	\$10.5	\$35	\$9	\$13.5	\$45
Large Backpack	\$10	\$15	\$50	\$12.5	\$18.75	\$62.5
Small 18L	\$7	\$10.5	\$35	\$9	\$13.5	\$45
Medium 20L	\$8	\$12	\$40	\$10	\$15	\$50

Tents

6 person	\$35	\$52.5	\$175	\$44	\$66	\$220
4 - 5 person	\$30	\$45	\$150	\$37.5	\$56.25	\$187.5
2 person	\$25	\$37.5	\$125	\$31.5	\$47.25	\$157.5

Ice Chests

Ice Chest/Cooler.....	\$10	\$15	\$50	\$12.5	\$18.75	\$62.5
-----------------------	------	------	------	--------	---------	--------

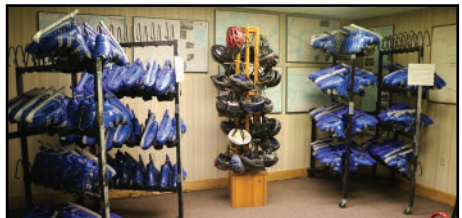
LAWN & GARDEN

Lawn Mower.....	\$25	\$37.5	\$125	\$31.5	\$47.25	\$157.5
Gas Trimmer	\$15	\$22.5	\$75	\$19	\$28.5	\$95
Lawn Package.....	\$42	\$63.75	\$212.5	\$57	\$85.5	\$285
Ladder.....	\$6	\$9	\$30	\$7.5	\$11.25	\$37.5

BIKES

All bikes come with helmet & lock when available.

Fat Tire Bikes.....	\$40	\$60	\$200	\$50	\$75	\$250
Mountain Bikes.....	\$30	\$45	\$150	\$37.5	\$56.25	\$187.5



RV STORAGE LOTS

7 fenced storage lots located across JBER. Proof of Ownership (Registration or Title) required prior to being issued a space. Insurance recommended.

MEMBER PRICING	NON-MEMBER PRICING
----------------	--------------------

RV Storage (per foot)	\$2.00	\$4.00
Pull-thrus.....	\$2.25	\$4.25

Specs

Sites Available..... 15' - 55' PT

Auto-pay

Automatic payments using a credit/debit card account is required. No other forms of payment accepted.

JBER Life! Members that sign up with auto pay will receive the first month FREE. Proof of membership required at sign up. Normal payments resume after 1 month.

- **Maple Lot**
Located off Gibson Avenue
- **Persimmon Lot**
Corner of 3rd st & Finletter Avenue
- **Zeamer Lot**
Zeamer Avenue - by JBER Hospital
- **Northern Light Lot**
North Otter Lake Road
- **Little Dipper Lot**
South Otter Lake Road
- **Milky Way Lot**
Davis Highway across from the Vet Clinic
- **Solar Eclipse Lot**
27th St, off Richardson Dr



CAMPGROUNDS

FAMCAMP

- Zeamer Avenue - by JBER Hospital
- RV sites: 63 spots
- Tent sites: 11 spots

Pricing

- RV Site w/water & electric (per night).....\$27
- Over Flow Parking (per night).....\$22
- Tent Site (per night).....\$12

FAMCAMP has a centralized dump site for entire campground to share.

Winter Camping

Pricing

- Per Night.....\$27
Limited sites at FAMCAMP open during the winter. Electric only. Water, dump station and bath house unavailable.

Black Spruce

- Otter Lake Road, north of Army Reserve Center
- RV Sites: 45 spots
- Tent Sites: 5 spots

Pricing

- RV Site w/ water, electric, & dump (per night)..\$33
- RV Site w/water & electric (per night).....\$30
- Tent Site (per night).....\$12

Black Spruce is closed during the winter.

Registration

RV Campground sites are issued on a "first-come, first served" basis. Registration envelopes and payment boxes are located at each campground entrance. The top portion of the envelope should be removed and placed on the campsite number post.

Pets

Max of two pets per site. Pets must be kept on a leash no longer than 6 feet at all times.

Fires

Open campfires are prohibited. Barbecue grills may be used.

Campgrounds were developed for recreational camping purposes, not for use by patrons as a residence or place of business.

TRAILERS

	DAILY MEMBER PRICE	WEEKEND RATE (Fri-Mon)	WEEK RATE (7 DAYS)	DAILY NON-MEMBER	WEEKEND RATE (Fri-Mon)	WEEK RATE
Cargo Trailers						
22' 10K Car Hauler	\$80	\$120	\$400	\$100	\$150	\$500
Enclosed 6x12'	\$45	\$67.5	\$225	\$56.5	\$84.75	\$282.5
Enclosed 5x10'	\$35	\$52.5	\$175	\$44	\$66	\$220
Utility Trailers/Sled Beds (tie down straps/ropes not included)						
3 place	\$50	\$75	\$250	\$62.5	\$93.75	\$312.5
2 place	\$40	\$60	\$200	\$50	\$75	\$250
Utility Trailer	\$30	\$45	\$150	\$37.5	\$56.25	\$187.5

WINTER RENTALS

	DAILY MEMBER PRICE	WEEKEND RATE (Fri-Mon)	WEEK RATE (7 DAYS)	DAILY NON-MEMBER	WEEKEND RATE (Fri-Mon)	WEEK RATE
Daily						
Skis, XC Adult Package	\$20	\$30	\$100	\$25	\$37.5	\$125
Skis, XC Kids Package	\$10	\$15	\$50	\$12.5	\$18.75	\$62.5
Ice Skates	\$5	\$7.5	\$25	\$6.5	\$9.75	\$32.5
Sled, 1-person	\$5	\$12.50	\$25	\$6	\$15	\$30
Snowshoes	\$5	\$7.5	\$25	\$6.5	\$9.75	\$32.5
Seasonal						
Skis, XC Adult Package	\$150	---	---	\$187.5	---	---
• Includes skis, boots & poles						
• Snowshoes	\$70	---	---	\$87.5	---	---
Ice Fishing						
Ice Shelter						
• Small	\$25	\$37.5	\$125	\$31.5	\$47.25	\$157.5
• Medium	\$30	\$45	\$150	\$37.5	\$56.25	\$187.5
• Large	\$35	\$52.5	\$175	\$44	\$66	\$220
Mr. Heater	\$5	\$7.5	\$25	\$6.5	\$9.75	\$32.5
Fishing Rod & Reel	\$5	\$7.5	\$25	\$6.5	\$9.75	\$32.5
Ice Skimmers	\$2	\$3	\$10	\$2.5	\$3.75	\$12.5
Ice Augers	\$25	\$37.5	\$125	\$31.5	\$47.25	\$157.5
Large Cargo Sled	\$10	\$15	\$50	\$12.5	\$18.75	\$62.5
Winter Equipment						
Snow Blower (Small - HOME USE ONLY)	\$25	\$37.5	\$125	\$31.5	\$47.25	\$157.5

FIT TO FIGHT XC SKI



Eagleglen Fitness Park • Bldg. 4414 Pease Ave.

Wednesday – Saturday • Closed Holidays

• Equipment issue: Mon – Sat • 10 a.m. - 2 p.m.

• Equipment must be returned by 3 p.m.

JBER Life! MembersFREE

Non-Members.....\$5

All sizes available, to include youth-sizes.

MISCELLANEOUS

	DAILY MEMBER PRICE	WEEKEND RATE (Fri-Mon)	WEEK RATE (7 DAYS)	DAILY NON-MEMBER	WEEKEND RATE (Fri-Mon)	WEEK RATE
--	--------------------	------------------------	--------------------	------------------	------------------------	-----------

Bouncy Houses.....	\$150	\$225	\$750	\$187.5	\$281.25	
\$937.5						
Bouncy Joust.....	\$150	\$225	\$750	\$187.5	\$281.25	\$937.5
Dunk Tank/Sumo Suits	\$150	\$225	\$750	\$187.5	\$281.25	\$937.5
Bubble Ball Suits (set of 10)	\$100	\$150	\$500	\$125	\$187.5	\$625
Generators 2k.....	\$35	\$52.5	\$175	\$44	\$66	\$220
Generators 3k.....	\$40	\$60	\$200	\$50	\$75	\$250
Santa Suit	\$30	\$45	\$150	\$37.5	\$56.25	\$187.5
Super Cooker	\$75	\$112.5	\$375	\$94	\$141	\$470
Smoker Large.....	\$50	\$75	\$250	\$62.5	\$93.75	\$312.5
Vacuum Sealer.....	\$30	\$45	\$150	\$37.5	\$56.25	\$187.5
Ladders, Extensions, or Steps.....	\$6	\$9	\$30	\$7.5	\$11.25	\$37.5
Binoculars/Spotting Scopes	\$5	\$7.5	\$25	\$6.5	\$9.75	\$32.5
Cotton Candy Machine.....	\$15	\$22.5	\$75	\$19	\$28.5	\$95
Snow Cone Machine	\$15	\$22.5	\$75	\$19	\$28.5	\$95
Picnic Games (assortment)	\$10	\$15	\$50	\$12.5	\$18.75	\$62.5

Tables & Chairs

8' Tables	\$4	\$6	\$20	\$5	\$7.5	\$25
6' Tables.....	\$3	\$4.5	\$15	\$4	\$6	\$20
Chairs	\$2	\$3	\$10	\$2.5	\$3.75	\$12.5



CANOPY & PAVILLIONS

Cottonwood Park & Paxton Park

10x10 Canopy.....	\$30	\$45	\$150	\$37.5	\$56.25	\$187.5
10x20 Canopy.....	\$50	\$75	\$250	\$65	\$97.5	\$325
Private Pavilion.....	\$100	\$150	\$500	\$125	\$187.5	\$625
Official Pavilion.....	\$80	\$120	\$400	\$100	\$150	\$500



OUTDOOR RECREATION CENTER

Bldg. 794 Davis Hwy.

HOURS OF OPERATION

Mon–Fri: 9 a.m. - 6 p.m.

Sat, Sun & Holidays: Closed

Main building located just off Davis Hwy on Ft. Richardson.

