

# JBER Life!

YOUR FSS/MWR GUIDE  
JANUARY 2023

## FITNESS EXPO

pg. 17



## JBER'S GOT TALENT

pg. 7

## MOOSE ON PARADE

pg. 13

## CHILD & YOUTH PROGRAMS ARE HIRING

pg. 20

# WE'RE HIRING

JOIN OUR TEAM

APPLY  
NOW

## We are looking for:

- Ski Lift Operators
- Ski Rental Assistant
- Ski Patrol
- Snowboard & Ski Instructors

Prior experience not required.  
Training provided for all positions.

For more information contact  
NAF HR at 552.4563 or visit  
[JOBS.JBERLIFE.COM](http://JOBS.JBERLIFE.COM)

**HILLBERG SKI AREA**  
23400 41<sup>st</sup> St • 552.4838



Cover: Patricia M.

## FSS LEADERSHIP TEAM

**773 FSS Director**  
Joseph Dyson

**Deputy Director**  
Moirra Trevisan

**673 FSS Commander**  
Lt Col Olivia Korte

**Deputy Director**  
Christine Kaleikini

## MARKETING TEAM

**Marketing Director**  
Kelsey P.

**Sponsorship Coordinator**  
Kyle H.

**Graphic Design**  
Nicholas H.  
Patricia M.

**Operations Clerk**  
Kendra C.

**Web & Social Media**  
Joshua D.

For information on **JBER LIFE!**,  
call **907.552.5900** or email  
[673fss.Marketing@us.af.mil](mailto:673fss.Marketing@us.af.mil)

No Federal endorsement of  
sponsors/advertisers intended  
within this publication.

## IN THIS ISSUE

- pg. 5 | Cross Country Ski
- pg. 7 | JBER's Got Talent
- pg. 8 | Meet Gena Walker
- pg. 11 | Bowling Winter Break Special
- pg. 13 | Moose On Parade
- pg. 15 | One Day Winter Kids Camp
- pg. 17 | Fitness Expo
- pg. 18 | Winter Photography Trip
- pg. 20 | CDC is Hiring
- pg. 22 | EFMP Dog Sledding
- pg. 24 | Disney Military Salute
- pg. 29 | Indoor Soccer
- pg. 32 | Free Movie Showings  
Barbarian & Paws of Fury
- pg. 34 | Food – This Month's Specials

## STAY CONNECTED *with your community*



LIKE US ON FACEBOOK  
[@JBERLIFE](https://www.facebook.com/JBERLIFE)



FOLLOW US ON INSTAGRAM  
[@JBERLIFE](https://www.instagram.com/JBERLIFE)



VIEW EVENT PHOTOS ON FLICKR  
JBER LIFE!



CHECK US OUT ON THE WEB  
[JBERLIFE.COM](http://JBERLIFE.COM)

## SEASON GEAR RENTALS

The Outdoor Recreation Center has all the winter toys out. Don't forget we also offer Adult and Children's season packages. Popular items include:

- Cross Country Ski Equipment
- Fat Tire Bikes
- Ice Fishing Equipment
- Snow Blowers
- Snowmachine Trailers
- Snowshoes
- Sleds
- Ice Skates
- Plus more!

## SNOWSHOES

Did you know, according to popular belief, snowshoeing is more difficult than hiking? That's right! Many people use this fact to make it an extreme sport.

The Outdoor Recreation Center has snowshoes that make hiking the trails in the winter fun. If you think you're up to the task, give it a go. You can even train for snowshoe races.

## ICE SKATING

We have lots of skates available. Play it safe and wear a helmet. The Outdoor Recreation Center has helmets and skating aids available so you can be safe and have fun. Don't forget to always check the lakes to make sure it's safe first!

## ICE FISHING

We have your gear ready for a day of winter fishing. Come by the Outdoor Recreation Center on the Elmendorf side of base to get your gear. We sell Alaska State Fishing Licenses as well.

## FAT TIRE BIKES

Biking in the winter? We have a few Fat Tire bikes available. Come try this outdoor activity. It's fun and a great way to get out there. Give it a try, you might like it!

## CROSS COUNTRY SKI RENTALS

Mon – Fri • 10 a.m. – 3 p.m.

If you have not gotten your ski's yet, they will be half price on 15 Jan. Rentals are available in all sizes at the Outdoor Recreation Center.



## CROSS COUNTRY SKIING

Where there's snow, there's cross country skiing! Bring your skis and hit the trails at EagleGlen Fitness Park. This is a great workout if you're wanting to find something different from your morning run. Bring a friend and try it out. Trails will be groomed twice a week, depending on weather conditions.

All season rentals must be returned by Sun 16 Apr.



## ARCTIC OASIS COMMUNITY CENTER

9497 20th St. • 552.8529



### KIDS ZUMBA

Thursdays • 5:30 – 6:15 p.m.  
\$2 per child • Parents are FREE  
The energy from Zumba is contagious! We are excited for kids of all ages to learn new dance moves to some tunes. Parents, don't forget to join in on the fun.

### MUSIC LESSONS

\$140/30 minutes  
\$190/1 hour

- First student: \$140/month
  - Second student: \$100/month
  - Additional student: \$75/month
- Private music lessons are held once a week for one month. Our classes are self-paced for all instruments, ages, and skill levels.

## WINE & PAINT PARTY

Fri 20 Jan  
5:30 – 7:30 p.m.  
21+ • \$45/person

Join us at the Arctic Oasis Community Center for a great time with wine and the painting of winter snowmen and gnomes. All materials, plus wine and snacks, will be provided. Limited spots available. Must register by Thurs 19 Jan.

Must be 21+ to attend. Sign up by calling 552.8529 or visit the front desk.

*We will be painting this!*



# JBER'S GOT TALENT

## AUDITIONS

Sat 11 Feb • 3+ • FREE  
10 a.m. – 12 p.m. & 1 – 3 p.m.

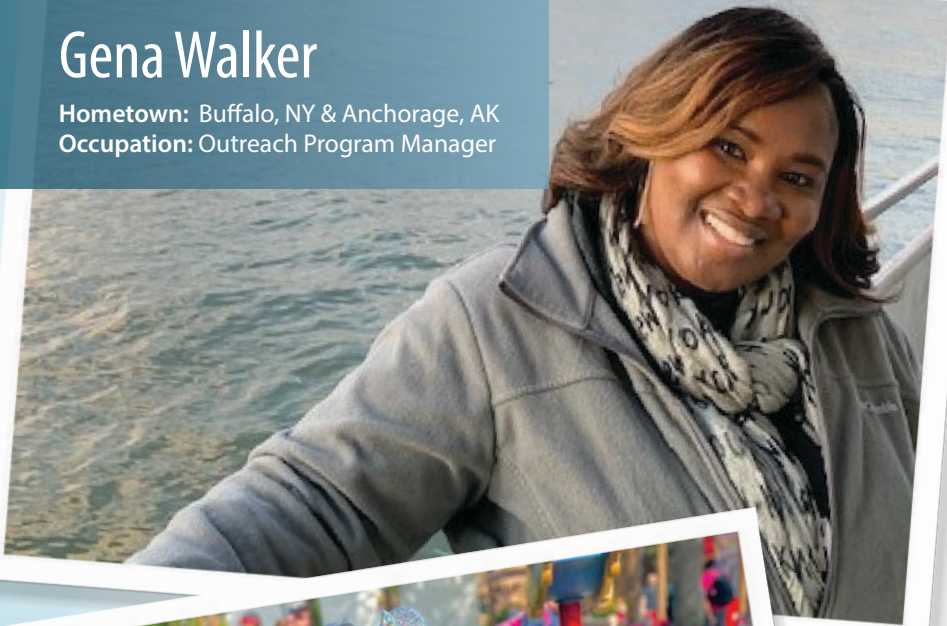
Do you have what it takes to showcase your talent? The Inaugural JBER's Got Talent is coming to you live Sat 25 Feb at 4 p.m. Auditions will be held on Sat 11 Feb from 10 a.m. – 12 p.m. and 1 – 3 p.m.

Must bring music, materials, or instruments for auditions that are appropriate for all ages. No bands at this time. Auditions will be no longer than 1 minute and 30 seconds. Starting Mon 9 Jan reserve your spot or call the Arctic Oasis Community Center for auditions. Reservations close Sat 4 Feb. For questions and concerns please call Arctic Oasis at 552.8528.

Talkeetna Theater, 7100 Fighter Dr.

## Gena Walker

Hometown: Buffalo, NY & Anchorage, AK  
Occupation: Outreach Program Manager



# People of JBER

### What are some of your daily duties as the Outreach Program Manager?

I oversee the Child & Youth Program's Training and Curriculum Specialists, Family Child Care, and USDA Food Program teams. My days are filled with a mix of meetings to advocate for these programs, training and supporting staff/providers, and enjoying activities in the classrooms/FCC homes with the children.

### What do you like the most about working for FSS?

FSS personnel has the pleasure of helping the community have fun. We all work especially hard. FSS allows us to "play" hard as well.

### How long have you been working on JBER?

I've worked on JBER for 28 years.

### What is the coolest thing about your job?

Seeing the "lightbulb moment." It can be training and helping staff/providers grow professionally, or seeing children/youth learn and refine new skills developmentally. It is always a joy. I am also appreciative of all the relationships I have been able to build with families throughout the years. I was recently reconnected with a family whose 2-year-old I helped to potty train years ago. Today he is an ER nurse that has worked on the frontline throughout the COVID Pandemic. These moments are always so fulfilling for me.

### What is your favorite thing to do this time of year?

At this time of year, I enjoy noting that we are midway through the winter, so I can plan my traveling adventures for the new year, "ITT, I'll be visiting soon!" This year, I want to take my grandchildren tubing, possibly hop on an ATV before the snow melts, and then jump on a plane for vacations.

### Fun facts about yourself?

I started working on JBER with Child & Youth Programs a month after graduating high school, and have lived in Alaska for over 35 years.

## POLAR BOWL

7176 Fighter Dr • 753.PINS

### HOMESCHOOL P.E. DAYS

Thursdays • 12 – 4 p.m.

- Each Game: 0.99¢
- Must show your homeschool ID

### BOTTOMLESS BOWLING

Thursdays • 4 – 8 p.m.

- Each Game: \$3.99
- All You Can Bowl: \$9.99/person

### MAD SKILLS GAMES

Thursdays • \$24.99/hour

Fri – Sun • \$29.99/hour

### RENT-A-LANE

Thursdays • \$19.99/hour\*

Fri – Sun • \$24.99/hour\*

Saturdays • 12 – 3 p.m. only\*

### WEEKDAY SPECIAL

Thursdays & Fridays • 12 – 4 p.m.

- Each Game: \$1.29



### PARENT AND TOT DAYS

Fridays • 12 – 4 p.m.

- Each Game: 0.99¢

### OPEN BOWLING

Fridays • 4 – 10 p.m.

- Each Game: \$3.99
- 1-Hour: \$19.99/lane

### LEARN TO BOWL CAMP

Saturdays • 2:30 – 4 p.m.

Sign-up for February classes begin Thurs 5 Jan

- 30 minutes of video and instruction
- 1 hour of hands-on learning on the lane

### NEON BOWLING

Saturdays • 5 – 10 p.m.

- Each Game: \$4.99
- 1 hour: \$13.99/person\*
- 2 hours: \$16.99/person\*
- 3 hours: \$19.99/person\*

### SUNDAY FUNDAY

Sundays • 1 – 6 p.m.

- Each Game: \$3.29
  - 90-Minute • \$39.99/lane\*
- Includes two FREE pitchers of soda

### BIRTHDAY PARTIES

Celebrate your party with us! We do all the work; you have all the fun! Call for rates and package options.

\*Includes shoes.  
\$3.99 shoes unless otherwise noted.



# SPECIAL EVENTS

### WINTER BREAK SPECIAL

5 & 6 Jan • 12 – 4 p.m.

- Each Game: \$1.29
- 1 hour: \$6.99/person\*
- 2 hours: \$8.99/person\*

### RAINBOW COLORED HEADPIN NIGHT

Thurs 5, 12, 19, & 26 Jan • 5 – 8 p.m.

- Each Game: \$3.99

Any rainbow colored headpin strike wins a stuffed animal or a free game.

### MUSIC THEMED NIGHTS

Fridays • 4 – 10 p.m.

- 6 Jan: Pop Music
- 13 Jan: Country Music
- 20 Jan: Hip Hop Music
- 27 Jan: Rock Music

### DOLLAR DAY

Mon 9 Jan • 3 – 8 p.m.

- Each Game: \$1.00

For one Monday a month, stop by the Polar Bowl and enjoy games for \$1. Shoes not included.

### TRIVIA NIGHT AT THE PUB

Fri 13 Jan • 6 p.m. • 21+

- \$10/person\*

Join us for some trivia at the Permafrost Pub, 9387 Kuter Ave. Must be 21 or older to participate.

Tickets sold at the Polar Bowl.

### TAG TEAM TOURNAMENT

Sat 28 Jan • 3 p.m. • 21+

- \$20/person\*

Team of two will tag team and after each other. The first player will bowl first, and the second one will go for the spare. Best total score of 3 game series. Payout is 1 in 5. Cash payout based on number of participants.



## ARTS & CRAFTS CENTER

755 D St. • 384.3717

### Classes

#### FRAMING

Wed 11 & Sat 21 Jan • 10 a.m.

Ages 12+ • \$50

Want to frame your own photo? Bring a 5x7 photo and learn how to measure and cut mats, glass, plus foam core to put a frame together for a unique piece of art. Class required before DIY use. Framing class is required prior to the use of self service in our shop.

#### WOOD SHOP

Wed 11 & 25 Jan • 10 a.m.

Sat 21 Jan • 10 a.m.

Ages 16+ • Cost: \$10

Learn the skills needed to create one of a kind pieces in our wood shop. This class is mandatory for future self service performed in our wood shop. Must be at least 16+. Safety glasses and ear protection must be worn at all times.



#### GLASS FRIT

Sat 14 Jan & Wed 25 Jan • 10 a.m.

Ages 5+ • \$30

Like Gnomes or want to make something cute for your little garden? In this class, you will be given a pattern of either a Gnome or mushroom to create a cute "mosaic."

#### GLASS FUSION

Wed 18 Jan & Sat 21 Jan • \$30

In this class, you will learn to trace a gnome or mushroom design, cut glass, grind glass and assemble your artwork to be fused in the kiln.

#### ALCOHOL INK

Sat 28 Jan • 5 p.m.

Ages 18+ • \$35 – \$45

Learn different techniques with alcohol ink and create a Raven to take home.

#### CLAY HANDBUILDING

Sat 28 Jan • 10 a.m.

Ages 5+ • \$30

In this class, you will learn different skills and techniques to make different clay items by hand. 7–10 days after they complete their piece, return to glaze at no additional cost.

*All class registrations close 72 hours prior to class start times. Facility is closed on Sundays and Mondays.*

### Homeschool Classes

Fridays • 10 a.m. • Ages 5 – 18

#### CLAY HANDBUILDING

Fri 6 & 20 Jan • \$30

In this class, you will learn how to make different clay items by hand. 7–10 days after they complete their piece, return to glaze at no additional cost.

#### GLASS FRIT

Fri 13 Jan • \$30

In this class, you will be given a pattern of either a mushroom or a gnome to create a "mosaic."

#### ALCOHOL INK

Fri 27 Jan • \$30

Class will consist of creating a Raven with alcohol ink that is yours to take home.

### Self Service

#### FRAMING

Tuesday – Friday • 8 a.m. – 4 p.m.

Saturday • 10 a.m. – 4 p.m.

#### WOOD SHOP

Tuesday – Friday • 8 a.m. – 4 p.m.

Saturday • 10 a.m. – 4 p.m.

#### CERAMICS & POTTERY

Tuesday – Friday • 8 a.m. – 4 p.m.

Saturday • 10 a.m. – 4 p.m.

### Custom Service

#### LASER ENGRAVING

Tuesday – Friday • 8 a.m. – 4 p.m.

#### FRAMING

Tuesday – Friday • 8 a.m. – 4 p.m.

Saturday • 10 a.m. – 4 p.m.

# Moose On Parade!



**\$150 per 3' Wooden Moose**

**\$20 per pattern • All ages**

*All submissions turned in by Sat 4 Feb*

Attention all artists, we have a contest coming up! Come pick up a 3 ft wooden moose or a pattern at the Arts and Crafts Center from 13 Jan – 3 Feb. The painted Moose will be posted on the JBER Arts & Crafts Facebook page from 6 – 12 Feb. Post with the most likes will win. Winners who place in the top 3 will be announced Mon 13 Feb.

## AERO CLUB

Hangar 7 • 10286 Taxi Way #P • 552.5435



# PRIVATE PILOT GROUND SCHOOL

Aero Club offers ground school courses for the private pilot certificate and the instrument rating. Register at least two weeks prior to class to ensure space and training materials are available.

To register for the school or for more information **SCAN HERE!**



**17 Jan – 16 Mar**  
**Tuesdays & Thursdays • 6 – 9 p.m.**  
**28 Mar – 25 May**  
**Tuesdays & Thursdays • 6 – 9 p.m.**  
**\$710 per Course plus Training Kit**  
If you want to begin your journey to become a pilot, this is the best time to start. Our Private Pilot Ground School is the first step to earning your wings. The purpose of ground school is to help you prepare for the required FAA knowledge test. This provides the foundations for becoming a competent aviator in the Last Frontier.

## HILLBERG SKI AREA

23400 41<sup>st</sup> St • 552.4838

**MON 1 JAN: CLOSED**

**MON 16 JAN: 10 A.M. – 6 P.M.**

### DOG SLEDDING

**6 – 8, & 14 – 16 Jan • 12 – 5 p.m.**

**\$5 • Ages 12 and under**

**\$10 • Ages 13+**

The snow is here and the sleds are out! Come mush with us and enjoy one of the most famous activities from Alaskan history.

This activity is weather dependent and locations may vary. Purchase your tickets the day of the event at Hillberg. Limited slots available.

### ONE DAY WINTER KIDS CAMP

**Mon 16 Jan • 1 – 4 p.m.**

**Ages: 6 – 13**

Forget summer camp, it's time for winter camp! Come join us for all the fun tubing, skiing, or snowboarding. Call 552.4838 to register today. Limited slots available. Tubing is weather depend.

- With rentals: \$90
- Without rentals: \$80





## BUCKNER FITNESS CENTER

690 D St. • 384.1301

# GROUP SWIM LESSONS

### Group:

- Sign-ups begin  
Mon 30 Jan • 9 a.m.

### Private:

- Sign-ups begin  
Wed 1 Feb • 9 a.m.

Start your new year by learning how to swim! Register at the Fitness Pool Office or call 384.1301.



## ELMENDORF FITNESS CENTER

9510 22nd St. • 552.3624

# SWIM LESSONS

### Group:

- Open enrollment:  
Mon 30 Jan • 9 a.m.
- Register at EFC front desk or call 552.3624.

### Private:

- Early enrollment:  
Thurs 19 Jan • 9 a.m.  
*Current students*
- Open enrollment:  
Mon 23 Jan • 9 a.m.  
Register by calling 552.0613 or email [emilia.porter@us.af.mil](mailto:emilia.porter@us.af.mil)



## ELMENDORF FITNESS CENTER

9510 22nd St. • 552.3624

### 2023 FITNESS EXPO

Sat 7 Jan • 10 a.m. – 4 p.m.

Join us at our Fitness Expo where you can experience and demo different fitness classes, view available equipment, plus receive health and wellness information from countless agencies. The expo will be held in the main gymnasium and aerobics rooms of the EFC.

Know what classes you want to take? Scan below for our class schedule!



**ORDER NOW**

Visit us at  
Tikahnu Commons

f t i d raisingcanes

**DOWNLOAD THE APP  
OR ORDER ONLINE  
RAISINGCANES.COM**

## OUTDOOR ADVENTURE PROGRAM

7301 13<sup>th</sup> St • 552. 2023



### CROSS COUNTRY SKI LESSONS EAGLEGLLEN

Fri 13 Jan • 12 – 1 p.m. • \$19

Want to learn something new this winter instead of doing your normal morning run? Check out this class and add this cardio exercise to your list of options for your daily workout.

### SNOWMACHINE RIDE – WILLOW

Sat 14 Jan • 7:30 a.m. – 5 p.m.

- Passenger: \$60
- Driver: \$119

Time to check this off your bucket list. Join us for a snowmachine ride in Willow. Bring a partner to join the ride and enjoy the views of the great Matanuska-Susitna Borough.



### INTRO TO ICE FISHING

Mon 16 Jan • \$99 per family

- 12 – 2 p.m.
- 2:30 – 4:30 p.m.

Like fishing? Here's a new way to go about it. Experience fishing like a true frontiersman in the great north!

### KIDS CLIMB

Wed 25 Jan • 5 – 7 p.m.

Ages 5 – 12 • \$10

Seeking to provide an active and engaging atmosphere for your kids? We've got you covered for new and returning young climbers.

### WINTER PHOTOGRAPHY TRIP – NEW

Sun 29 Jan • 8:30 a.m. – 4 p.m. • \$49

Attention all new and experienced photographers! What better place and time to learn or hone your photography skills than in the great outdoors. On this hike, you will be guided along with a professional photographer to capture the beautiful winter landscape of the Last Frontier. Don't forget your camera!



REC★ON



SINGLE SERVICE  
MEMBERS

Like the outdoors? Check out our Rec★On program! Trips can be reserved up to 30 days in advance. Programs are open to all branches of service. Equipment provided. Participants who do not qualify for Single Service Member pricing may sign up at the regularly priced rate. For more information, call 552.2023.

### FAT TIRE BIKE DAY RIDE

Sun 22 Jan • 8:30 a.m. – 5 p.m.

\$49 → \$25

Join us for an all day winter bike ride with this deal!

### CROSS COUNTRY EVENING SKI BEACH LAKE – NEW TRIP!

Fri 27 Jan • 5 – 9 p.m.

\$39 → \$25 • Ages 12+

Here's a deal for our nighttime cross country skiers.

### SNOWMACHINE RIDE WILLOW

Sat 28 Jan • 7:30 a.m. – 5 p.m.

- Passenger: \$60 → \$10
- Driver: \$119 → \$35

Rec★On members, check out this deal! Come out for a ride in the great Matanuska-Susitna Borough for a fun snowmachine adventure.

Open to all Single Service Members of any branch. For more exciting events and updates follow us @GoJBER, an exclusive Instagram page for those who want to get out and explore.

### FAT TIRE EVENING RIDE

Thurs 12 Jan • 5 – 9 p.m. • \$15

Have you tried riding in the snow with Fat Tire bikes? All single Service Members come out and join us for this one of a kind nighttime winter adventure.

### INDOOR ROCK CLIMB & FAT TIRE BIKE COMBO ADVENTURE

Sun 15 Jan • 8:30 a.m. – 5 p.m. • \$15

Rock climbing or biking not enough for you? Get out of the barracks and dorms for an all-day adventure of climbing and riding a fat tire bike.

### SNOWMACHINE RIDE – WILLOW

Sat 21 Jan • 7:30 a.m. – 5 p.m. • \$15

Single Service Members, here's a deal you don't want to miss out on. Come out on a snowmachine adventure in Willow, and check this off your bucket list!

## CHILD & YOUTH PROGRAMS ARE

# Hiring!

Working for Child and Youth Programs is fulfilling and fun! At JBER, there are a variety of positions that are available including positions that work directly with children in the classroom to support staff. Each position provides a unique experience that will contribute to the health, safety, and developmental growth of our JBER children and youth ages 6 weeks to 18 years.

### WHY SHOULD I WORK WITH JBER CHILD & YOUTH PROGRAMS?

There are numerous benefits to working for the JBER Child and Youth Programs. The programs are open Monday through Friday. We offer competitive, regular, and flexible paying positions, which can meet your full-time or part-time work needs. With competitive and regular positions, we offer paid holidays, sick and annual leave, health, dental and vision plans, and 401K, retirement, and life insurance options. We offer college tuition assistance, and on-the-job training. If you haven't been looking for job because of childcare rates and the waitlist, then you will be happy to know that as a Child and Youth Program employee you receive priority childcare placement and your first child attends childcare for free with each additional child receiving an additional discount.

### WHAT DIFFERENT POSITIONS DO YOU OFFER?

Child and Youth Program Assistants are direct care staff who work in a classroom setting providing guidance, care and supervision over children 6 weeks to 18 years (depending on assigned age group). They prepare age-appropriate activities, oversee accountability for the children inside and outside, and provide meals and snacks. They create a welcome and nurturing learning environment for children and youth.

Office Automation Assistants are the front desk customer service staff of the organization. They greet visitors to the facility, provide oversight the family accounts, answers telephones, customer service, prepares memorandums, does child accountability checks, as well as a variety of other office tasks.

Drivers/laborers maintain the day-to-day maintenance of the facilities and equipment in both summer and winter conditions. They move furniture and equipment as needed. In addition, they are school bus drivers for our school age children, to and from school and on field trips. CDL is not required and we will pay for the CDL; however, you must be able to pass the requirements to hold a CDL.

Food Service Leaders, Cooks and Food Service Workers maintain the kitchens for the CDCs and SACs. They prepare meals and snacks for the children in the facilities, as well as orders and maintains stock levels on food. They clean and maintain the kitchen to public health standards.

### TIPS WHEN APPLYING:

Go to [USAJobs.gov](https://www.usajobs.gov) and type "NAF" in the Keywords and "Elmendorf AF Base, Alaska" in the location search bar to view and apply. Be descriptive and thorough. Also include qualifications pertaining to you, such as:

- Military Spouse Preference
- Outside Applicant Veteran
- Spouse/Widow/Parent of Veteran
- Transition Hiring Preference

Your audience is the hiring manager and HR. Assume they are unfamiliar with information pertaining to your current and prior positions. For each experience include:

- Specific duties and tasks
- Past experience with early childhood education, youth development, or related field.

## How do I apply?



CREATE A USAJOBS PROFILE



SEARCH FOR JOBS



REVIEW JOB ANNOUNCEMENT



PREPARE YOUR APPLICATION



SUBMIT YOUR APPLICATION

### HAVE ANY QUESTIONS?

Call 552.4563 or visit [Jobs.JBERLIFE.COM](https://Jobs.JBERLIFE.COM)

## MILITARY & FAMILY READINESS CENTERS

Army Community Services • 600, Richardson Dr, Rm A139 • 384.1517  
Log Cabin • 8535 Wewak Dr • 552.4943

### Exceptional Family Member Program (EFMP)

#### DOG SLEDDING

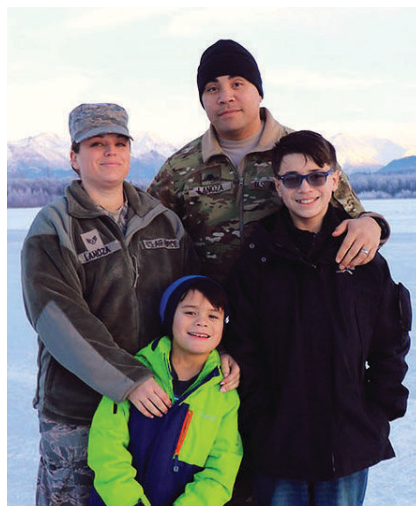
Sat 21 Jan and 4 Feb

12 – 5 p.m. • Otter Lake

Take your family out and experience true fun in the Last Frontier. Open to EFMP enrolled families. One ride per person and slots are limited. Registration is required.

### JBER Volunteer Program

Don't forget we are coming to the end of the year! Time to log your volunteer hours for 1 Jan – 31 Dec 2022 by COB 15 Jan 2023, in the Volunteer Information Management System (VIMS) or submit them to: JBER Volunteer Coordinator at 673FSS.FSFR.FamilyPrograms@us.af.mil.



### Employment Readiness

#### LINKEDIN 101

Wed 11 Jan • 12 – 1 :30 p.m.

Put yourself out there and learn some basic skills and tips to getting started on LinkedIn. This class will show you how to optimize your profile to further your career path.

#### NAVIGATING USAJOBS

Wed 18 Jan • 12 – 1:30 p.m.

Learn how to analyze job opportunity announcements and how to prepare a competitive Federal resume.

#### NAIL YOUR NEXT INTERVIEW

Wed 25 Jan • 12 – 1 :30 p.m.

Not sure what to say at your next job interview? Want to speak confidently about yourself, your skills, and learn how to leave a good impression? Sign up for this class and learn how to present yourself to a potential employer and answer questions, from challenging to easy. Join us to learn the tips to knock-the-socks-off your interviewer!

Virtual session



SCAN HERE  
to register

## BUNDLES FOR

# BABIES

WED 18 JAN

9 A.M. – 10 A.M.

8535 WEWAK DR.

- BUDGET FOR BABY
- COPE WITH STRESS
- INFANT CARE/HANDLING
- SELECT CHILD CARE MEMBERS

Open to all Active Duty and families expecting a child or with a new baby (up to 6 months old). This class will be offered both in-person and online. To register or for more information, call 552.4943/384.1517.

## PCS Alaska

Fly, Float, or Drive

Wed 25 Jan • 9 – 10 A.M.  
Virtual only

Stressed out about moving? Moving overseas or in and out of Alaska can be intimidating. Join us to learn the basics on planning your PCS in order to better prepare yourself and get ahead of the game. Registration is required.



## INFORMATION, TICKETS & TRAVEL

9497 20th St. • 753.2378

### ALASKA WILDLIFE CENTER

Fri – Mon • 10 a.m. – 4 p.m.

Sun 1 Jan • Closed • Ages 5+: \$13

Too cold to see the animals? Visit us, even from the comfort of your car.

### ALASKA RAILROAD

Plan your trip to Fairbanks. Train goes north on Saturdays and back south on Sundays.

### ALYESKA LIFT TICKETS

Mon – Fri • \$35

Sat, Sun, & Holidays: \$60

Tickets are date specific.

### CINEMARK CENTURY 16

\$11 • Platinum movie tickets.

No Restrictions.

### HILLTOP SKI LIFT TICKETS

Single day access: \$27

### SEWARD SEALIFE CENTER

2 and under: Free

Child (3 – 12): \$14

Adults (13+): \$23

Venture out this winter for a fun activity for the entire family. Reservations required.

### WINTER HURRICANE TURN TRAIN

1<sup>st</sup> Thursday of the month.

*All prices and dates are subject to changes without notice. Tickets are non-refundable*



Juneau is one of the most beautiful cities and most visited communities in the state of Alaska. Juneau was established in 1880, when two men discovered gold in the area. As a result, a town site was established, making Juneau the first city founded after Alaska's purchase from Russia. Soon after, the city became home to the largest seen hard-rock gold mine, the Treadwell Mine. Then in 1906, Juneau became Alaska's territorial capitol and was inaugurated as the state capitol in 1959.

These days, downtown Juneau is still traditional and compact. Yet, it is incredibly easy to navigate on foot and is always a great tourist destination. The State Capitol Building and several notable museums are within walking distance of the cruise ships that dock in the town routinely. Walking is so popular for tourism in the city, that you can stop by the Juneau Convention and Visitors Bureau to get walking-tour maps of the city.

One of the city's most iconic sites is within the Tongass National Forest. The Mendenhall Glacier flows 12 miles from its source, the Juneau Icefield, and is over a mile across! The Mendenhall Glacier Visitor Center nearby hosts glaciology exhibits, a detailed map of the icefield, and a theater that routinely shows the film "Magnificent Mendenhall" for those interested in learning more.

Outside of the visitors' center are opportunities for salmon and bear viewing at Steep Creek, as well as six different hiking trails. These trails range from .3-mile overlook trails to a trek of several miles along Mendenhall Glacier's west face. Other activities in the area include glacier flightseeing tours, dog sled rides, and glacier treks for those interested in a bigger adventure.

During the summer months, Juneau has 60 humpback whales that are known to frequent the area. Many are commonly seen on the guided tours. One of these tours takes you to a sheer-sided fjord named Tracy Arm. A pair of tidewater glaciers reside in this fjord and often calve icebergs into the water.

In the winter make sure to check out the Eaglecrest Ski Area, which is one of the only municipally run downhill ski areas in the country. It features a sprawling 640 acres of open terrain with 31 alpine runs, 3 double chair lifts, Nordic trails, and a terrain park. It also boasts a comfortable and roomy day-lodge with rentals, repairs, food, and lockers. For best skiing conditions, visit Juneau between January and March.

Ready to start your next adventure by visiting Juneau? Book today or by calling 753.2378 or email [AFTravelAlaska@gmail.com](mailto:AFTravelAlaska@gmail.com)

## DISNEY MILITARY SALUTE

**Disneyland**  
3-Day Park Hopper ticket: **\$245**  
4-Day Park Hopper ticket: **\$280**

**Walt Disney World**  
4-Day Park Hopper ticket: **\$349**  
5-Day Park Hopper ticket: **\$369**

Maximum of 6 tickets can be purchased. Service Member or spouse must be present using one ticket. Tickets take 3 business days to process. Park reservations are needed. Some restrictions apply.

## UNIVERSAL ORLANDO

**2 Park Freedom Pass**

- Ages (3 – 9): \$195
- Adults (10+): \$200

**3 Park Freedom Pass**

- Ages (3 – 9): \$230
- Adults (10+): \$235

Unlimited visits between the date of purchase and 24 Dec 2023 with Military Freedom Passes. Discounts are also available for Resort stays. Must purchase all tickets needed at the same time.

## CHILD DEVELOPMENT CENTERS

DENALI • 7377 15<sup>th</sup> ST • 552.8304  
KATMAI • 7178 11<sup>th</sup> ST • 552.5113  
KODIAK • 6 DYE AVE • 384.1510  
TALKEETNA • 11 5<sup>th</sup> ST • 384.0686



### NEW YEARS DAY OBESERVED

Mon 2 Jan  
All CYP Closed

### MARTIN LUTHER KING JR. DAY

Fri 16 Jan  
Limited care will be available.

### PACAF FAMILY DAY

Fri 13 Jan  
Fri 17 Feb  
Limited care will be available.  
Registration open from  
Tue 17 Jan – Fri 3 Feb

### PARENT ACTIVITY: SNOW-FLAKES

Snowed in? Let's make some snowflakes! This class activity is fun for all, and sharing in it with others displays multitudes of exciting shapes. Fold your paper diagonally and cut off the excess paper at the bottom. Fold again in half and cut different shapes on the sides and corners. Unfold and see the different snowflakes you made. Don't forget to bring them to the program to display for everyone to see!

## FAMILY CHILD CARE

5091 10<sup>th</sup> ST • 552.3995

### BECOME A FCC PROVIDER

Family Child Care, Expanded Child Care and Respite Care Providers needed. Opportunities to provide care for children with special needs and specialized training provided.

### BENEFIT HIGHLIGHTS:

-  Earn up to \$2,500/week
-  Work in the comfort of your own home
-  Set your own hours and rates
-  FREE trainings, furniture, and toy check out
-  Transferable to other military installations
-  Get paid up to \$100/week for your own child



### FREE DEPLOYMENT CHILD CARE

Families are authorized 16 hours of FREE child care for pre and post deployment and for each month of the deployment/remote assignment. Care can be used once orders are issued through 60 days after return.

### Eligibility requirements are:

- Active Duty, Reserve, or Guard Member in activated status
- Assigned to or working on the installation
- Deployed in support of a contingency operation
- Deployed for a minimum of 30 calendar days or personnel who routinely deploy on a short-term basis



### DID YOU KNOW?

You need to be certified by FCC to offer more than 10 hours of child care a week on JBER?

## YOUTH/TEEN CENTERS

2RIVERS • 297 6<sup>TH</sup> St • 384.1508

KENNECOTT • 6104 Carswell Ave • 552.2266



### NATIONAL SPAGHETTI & TRIVIA DAY

Wed 4 Jan • 4 – 5 p.m.  
2Rivers

Come and enjoy some spaghetti and play a game of Italian Trivia.

### CELEBRATE MARTIN LUTHER KING JR.

17 – 19 Jan • Kennecott

We have some activities for celebrating Martin Luther King Jr.

- Tue 17 Jan: Virtual tour of the National Civil Rights Museum.
- Wed 18 Jan: Martin Luther King Jr Trivia.
- Thurs 19 Jan: Create an “I have a dream” project with “Random Acts of Kindness” board.

### NATIONAL POPCORN DAY

Thurs 19 Jan • 4 – 5 p.m.

Kennecott

Enjoy some popcorn and play a Popcorn Trivia Game.

### COMPLIMENT DAY

Tues 24 Jan

Create a board in the program for youth to add compliments of one another and others.

### BGCA NATIONAL FINE ARTS CONTEST

Fri 27 Jan • 4 – 4:45 p.m.

Artwork judging for BGCA National Fine Arts Contest.

### BACKWARD DAY

Tues 31 Jan

Wear something backwards to celebrate the day.

### INSPIRE YOUR HEART WITH ART DAY

Tues 31 Jan • 4 – 5 p.m.

Come and enjoy showing your creative side with a variety of art materials.

*All Youth Program events are FREE and for members only unless otherwise noted.*

## YOUTH SPORTS

6104 Carswell Ave • 854.2567

# INDOOR SOCCER



There's still time to register your child for the soccer season!

- Registration: **Now – 14 Jan 2023**
- Season: **13 Feb – 7 Apr**
- Fee: **\$95, uniform included**
- Ages: **5 – 15**

#### Divisions:

- Pee Wee: 5 & 6
- Bantams: 7 & 8
- Minors: 9 & 10
- Majors: 11 & 12
- Juniors: 13 – 15

All participants must be registered with the youth programs, have a current sports physical and immunizations record with current Flu Shot.

To register, email youth's name, sponsor's name, personal email, and age division to the following:  
[673FSS.FSY.Y.KennecottYC@us.af.mil](mailto:673FSS.FSY.Y.KennecottYC@us.af.mil)



### WE'RE LOOKING FOR

- Volunteer Coaches
- Officials – Paid Position

Please sign up at the Kennecott Youth Center for volunteer coaching.

For more information on the Coaches NYSCA Certification Course and paid positions please call 854.2567.

## INSTRUCTIONAL YOUTH PROGRAMS

9497 20th St • 854.2568

### BEGINNER

\$60/Month for 4 classes

#### Mondays

4:30 – 5:30 p.m. • Ages 5–7  
5:30 – 6:15 p.m. • Ages 3–4  
6:15 – 7:15 p.m. • Ages 5–7

#### Tuesdays

9:30 – 10:15 a.m. • Ages 3–4  
10:15 – 11 a.m. • Ages 4–5  
11 a.m. – 12 p.m. • Ages 6–10  
4:15 – 5 p.m. • Ages 4–5  
5 – 6 p.m. • Ages 5–7

#### Wednesdays

9:30 – 10:15 a.m. • 18 mos – 3  
*With parent involvement*  
10:30 – 11:15 a.m. • Ages 3–4  
11:30 a.m. – 12:30 p.m. • Ages 4–5  
3:15 – 4:15 p.m. • Ages 4–5  
4:30 – 5:30 p.m. • Ages 5–7  
5:30 – 6:30 p.m. • Ages 8–10

#### Thursdays

9:30 – 10:15 a.m. • 18 mos – 3  
*With parent involvement*  
10:30 – 11:15 a.m. • Ages 3–4  
11:30 a.m. – 12:15 p.m. • Ages 3–4  
12:30 – 1:30 p.m. • Ages 6–10  
4:30 – 5:30 p.m. • Ages 5–7  
5:30 – 6:15 p.m. • Ages 3–4  
6:15 – 7:15 p.m. • Ages 8–10

### INTERMEDIATE

\$75/Month for 4 classes

#### Tuesdays

6 – 7:15 p.m. • Ages 10–13

#### Wednesdays

6:45 – 7:45 p.m. • Ages 10–13

# Gymnastics



Sign up your child for Gymnastics today. We have beginner and intermediate classes for all ages. Our classes are held at the Arctic Oasis Community Center.

All gymnastics students are required to wear proper attire. We suggest gymnastics leotard, sweats, shorts, or other freely moveable clothing.

A current immunizations record, including this year's current flu shot, or an approved Child and Youth Programs immunization waiver is required to register for class.

To sign up for Gymnastics, email [673FSS.FSYY.TwoRiversYC@us.af.mil](mailto:673FSS.FSYY.TwoRiversYC@us.af.mil)  
*Classes are subject to cancellation or rescheduling with short notice.*

## JBER LIBRARY

7 4th St • 384.1640

### TWEEN/TEEN PAINT NIGHT

Thurs 26 Jan • 5 – 6:45 p.m.

Tweens: Ages 10–12

Teens: Ages 13–18

Tweens and Teens will have the opportunity to paint, socialize, and enjoy refreshments.

### PRESCHOOL STORY TIME

Tuesdays • 10:30 a.m. • Ages 3–5

In-person story time for preschoolers.

### TODDLER TALES

Thursdays • 10:30 a.m.

Ages Infant–2

In-person story time for toddlers.

*All library account holders will not be able to check out or renew books until new registration forms for 2023 have been filled out.*



# ADULT READING CHALLENGE

1 Jan – 28 Feb

JBER Library, 4th St. • FREE

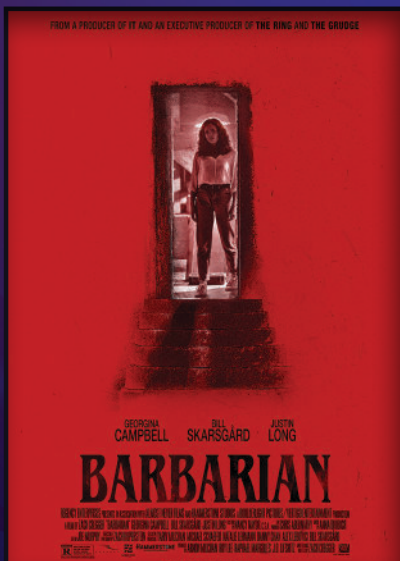
Read eight books to complete the challenge and earn all ten virtual Beanstack badges! Everyone who registers will have a chance to win a Red Robin gift card.

Register and log your books at [ElmendorfRichardson.Beanstack.org](http://ElmendorfRichardson.Beanstack.org)

Ages  
18+



# FRONTIER THEATER FREE MOVIE



**BARBARIAN**  
Sun 8 Jan • 18+  
Doors open: 1:30 p.m.  
Show starts: 2 p.m.

**PAWS OF FURY**  
Sun 22 Jan • All Ages  
Doors open: 1:30 p.m.  
Show starts: 2 p.m.

Outside food and drinks are welcome.  
Children under 13 must be accompanied by an adult.

Frontier Theater • 2 Richardson Dr • 384.9006

## WARRIOR ZONE

655 Richardson Dr • 384.9006

### GAME DAYS

Saturdays: 12 – 9 p.m.

Sundays: 9 a.m. – 9 p.m.

Mondays: 4 – 8 p.m.

Thursdays: 4:30 – 8:30 p.m.

Is your team playing this weekend? Can't see the game at home? Then look no further. Bring your friends and don't miss out on the action any longer. Every Saturday, Sunday, Monday, and Thursday during the NFL, NCAA, and NHL season will be aired in the Lounge for all your game day viewings. Snacks and drinks are available for purchase. Must present DOD ID to attend.



## 8 Ball Tournament

**Sat 21 Jan • Ages 18+  
FREE • 2 – 6 p.m.  
Lounge/Pool Room**

It's all about the angle. Pool plus friends equals a good time, so bring your friends and see who will win the 8 Ball Pool Tournament. Register by signing up at the Warrior Zone front desk or call 384.9006.

**Prizes:**

- 1<sup>st</sup> place: \$100
- 2<sup>nd</sup> place: \$75
- 3<sup>rd</sup> place: \$50

Snacks and drinks available for purchase. Must have 8 participants to offer cash prizes.

## IDITAROD DINING FACILITY

8088 25<sup>th</sup> St • 552.3114

### BBQ DISTRICT

Taste our smokin' hot new flavors with our favorite barbecue items and southern favorites.

### CHICKEN & SWEET POTATO WRAP

Grilled chicken, roasted sweet potatoes, arugula, shredded cabbage, feta cheese, lemon vinaigrette, and cranberry in a whole grain tortilla.

### CIAO PIZZA

Taco beef pizza with taco seasoned ground beef, ripe olives, jalapeño peppers, mozzarella cheese, cheddar cheese, and salsa.

### FIND YOUR FAVORITES:

Meatless Monday  
Street Taco Tuesday  
Comfort Food Wednesday  
Street Eat Thursday  
Fish Friday  
All Time Favorites on Weekends

### HASH BROWN BREAKFAST PANINI

Scrambled egg, bacon, crispy hash browns, American cheese, and mayo-ketchup on Italian bread.

### MARGHERITA QUESADILLA

Fresh mozzarella cheese, roasted grape tomatoes, fresh basil, pizza sauce, and balsamic drizzle in a crispy tortilla.

### THAI ZUCCHINI NOODLE SALAD

Chicken, cabbage, snow peas, edamame, zucchini noodles, cilantro, and lime tossed with sweet chili.

## Brunch at the DFAC!

- Breakfast Skillets
- Pasta station
- Carved meats
- Mocktails & more

## National Oatmeal Month

Celebrate National Oatmeal Month with overnight strawberry oats, a creamy combination of oatmeal, milk, yogurt, honey, and strawberries served chilled.



## MLK JR DAY

*Lunch Celebration Meal*

Mon 16 Jan • 10:30 a.m. – 1:30 p.m.

IDITAROD DINING FACILITY

OPEN TO EVERYONE

Complete your meal with a shrimp avocado salad, banan parfait or pie slice.

Chicken & Ham Jambalaya  
Shrimp Etouffee  
Grilled BBQ Pork Chop  
Red Beans & Rice  
Cheddar Mashed Potatoes  
Old Bay Seasoned Corn  
Garlic Cumin Green Beans  
Creamy Coleslaw  
Steamed White Rice



## PARADISE CAFÉ

9497 20th St • 552.0917

(Arctic Oasis)

### SOUTHWEST TURKEY PANINI

\$9.99

Smoked turkey, pepper jack cheese, baby spinach, and pico de gallo with chipotle mayonaise.

Add chips, cookies, and bottled water to make it a meal for \$13.99.

## TEN PIN

7176 Fighter Dr • 770.0374

(Polar Bowl)

### GRILLED CLUB SANDWICH

\$9.19

Ham, turkey, bacon, and American cheese with lettuce, tomato, and red onion loaded into a grilled sandwich.

Add tots, cookies, and fountain drink or bottled water to make it a meal for \$13.49.



# JBER CHAPEL COMMUNITY

## JBER LIFE GROUPS

The JBER Religious Operations Center is starting a new Protestant ministry for all Airmen and Soldiers called JBER LifeGroups! There will be Multiple groups meeting at various locations around base. Scan the QR code to sign up today!



## FAMILY LIFE CHAPLAIN

Individual Marriage and Family Therapist providing training, co-counseling, consultation, and a referral resource for your Unit Chaplain.

Questions on all chapel activities, please call the JBER Religious Operations Center at 552.5762.



*Paid Ad.*

*Thank you*

## TO OUR WONDERFUL SPONSORS!

For their generous support of FSS events and the JBER community!  
This month's sponsors are:



If you are interested in reaching our **MILITARY & CIVILIAN** community on JBER, give us a call at 552.5473 or visit [JBERLIFE.COM/Opportunities](http://JBERLIFE.COM/Opportunities)

# DIRECTORY

## FUN

**AERO CLUB** • 753.4167 / 552.5435 • Hangar 7, Bldg. 10286  
 Mon – Fri: 10 a.m. – 3 p.m.  
 Family Days: 24/7 Access  
 Federal Holidays: 24/7 Access Only

**ARCTIC OASIS COMMUNITY CENTER** • 552.8529 • Bldg. 9497  
 ALL ACTIVITIES  
 Mon – Sat: 11 a.m. – 6 p.m.  
 FITNESS & PLAYGROUND ONLY  
 Mon – Fri: 9 – 11 a.m. & 6 – 8 p.m.  
 Family Days: 10 – 5 p.m.  
 Sun & Federal Holidays: Closed  
**PARADISE CUTS** • 753.1099  
 Please call for hours of operation

**ARTS & CRAFTS CENTER** • 384.3717 • Bldg. 755  
 Federal Holidays: Closed  
**FRAME SHOP**  
 Tuesday – Friday: 8 a.m. – 4 p.m.  
 Saturday: 10 a.m. – 4 p.m.  
 Sunday – Monday: Closed  
**ENGRAVING SHOP**  
 Tuesday – Friday: 8 a.m. – 4 p.m.  
 Saturday – Monday: Closed  
**CERAMICS & POTTERY**  
 Tuesday – Friday: 8 a.m. – 4 p.m.  
 Saturday: 10 a.m. – 4 p.m.  
 Sunday – Monday: Closed  
**WOOD SHOP**  
 Tuesday – Friday: 8 a.m. – 4 p.m.  
 Saturday: 10 a.m. – 4 p.m.  
 Sunday – Monday: Closed

**AUTO HOBBY** • 384.3718 • Bldg. 755  
 Thurs – Sun: 11:30 a.m. – 9:30 p.m.  
 Mon – Wed: Closed  
 Family Days: Normal Hours  
 Federal Holidays: Closed

**HILLBERG SKI AREA** • 552.4838 • Bldg. 23400  
 December – March (Weather Dependent)  
 Thurs & Fri: 4 – 8 p.m.  
 Sat & Sun: 12 – 6 p.m.  
 School Winter Break:  
 Mon – Sun & Holidays: 12 – 6 p.m.

**INFORMATION, TICKETS & TRAVEL** • 753.2378 • Bldg. 9497  
 Mon – Fri: 9:30 a.m. – 5:30 p.m.  
 Family Days: 10 a.m. – 2 p.m.  
 Federal Holidays: Closed

**LIBRARY** • 384.1640 • Bldg. 7  
 Mon & Fri: 9 a.m. – 6 p.m.  
 Tue & Thurs: 9 a.m. – 7 p.m.  
 Wed: 10 a.m. – 6 p.m.  
 Sat: 10 a.m. – 5 p.m.  
 Family Days: 9 a.m. – 6 p.m.  
 Federal Holidays: Closed

**MOOSE RUN GOLF COURSE** • 428.0056 • Bldg. 27000  
 Courses closed for the season  
 Clubhouse  
 Mon – Fri: 8 a.m. – 4 p.m.  
 Weekends, Holidays, & Family Days: Closed

**OTTER LAKE** • 854.1734 • Bldg. 65536  
 Call for Otter Lake Lodge & cabin rentals  
 Boat house closed for the season

**OUTDOOR RECREATION CENTER** • 552.2023 • Bldg. 7301  
 EQUIPMENT RENTALS  
 Mon – Fri: 10 a.m. – 6 p.m.  
 Sat: 10 a.m. – 2 p.m.  
 Sun: Closed  
 Family Days: Normal Hours  
 Federal Holidays: Closed  
 OUTDOOR ADVENTURE PROGRAM (OAP)  
 RV STORAGE LOTS • Bldg. 794  
 FAMCAMP CAMPGROUNDS  
 BLACK SPRUCE CAMPGROUNDS

**PERMAFROST PUB** • 552.3669 • Bldg. 9387

**POLAR BOWL BOWLING CENTER** • 753.PINS(7467) • Bldg. 7176  
 Thurs: 12 – 8 p.m.  
 Fri – Sat: 12 – 10 p.m.  
 Sun: 12 – 6 p.m.  
 Federal Holidays: Closed  
**IGLOO LOUNGE**  
 Thurs: 4 – 8 p.m.  
 Fri – Sat: 4 – 10 p.m.  
 Sun: 1 – 6 p.m.  
 Mon – Wed, & Federal Holidays: Closed

**SKET, TRAP & ARCHERY RANGE** • 384.7981 • Bldg. 45-100  
 Fri – Sun: 12 – 5 p.m.  
 Family Days: Normal Hours  
 Federal Holidays: Closed

**WARRIOR XTREME PAINTBALL** • 854.1734 • Upper Otter Lake  
*Closed for the season*  
 24 May – September 30  
*Reservations Only.*

**WARRIOR ZONE** • 384.9006 / 384.9023 / 384.RIDE • Bldg. 655 (BOSS/JBADD)  
 Mon, Thur, Fri: 9 a.m. – 9 p.m.  
 Tue – Wed: 9 a.m. – 6 p.m.  
 Sat & Sun: 12 – 9 p.m.  
 Federal Holidays  
 Weekday: 10 a.m. – 6 p.m.  
 Weekend: 12 – 8 p.m.

## FITNESS

**BUCKNER FITNESS CENTER** • 384.1369 • Bldg. 690  
 Staffed Hours:  
 Mon – Fri: 5 a.m. – 9 p.m.  
 Sat – Sun: 11 a.m. – 7 p.m.  
 Training Holidays: 7 a.m. – 7 p.m.  
 Federal Holidays: Fitness Access Only.

**BUCKNER FITNESS POOL** (FREE) • 384.1302 • Bldg. 690  
*For pool operations and program times, visit*  
*JBERLIFE.COM/Bucknerpool*

**EAGLEGLLEN FITNESS PARK** • 552.2023 • Bldg. 4414

**ELMENDORF FITNESS CENTER** • 552.3624 • Bldg. 9510  
 Staffed Hours:  
 Mon – Fri: 5 a.m. – 9 p.m.  
 Family Days: 7 a.m. – 7 p.m.  
 Federal Holidays: Fitness Access Only  
 Fitness Access: Available 7 days a week

**HANGAR 5** • 552.3624 • Bldg. 7309  
 Sun – Sat: Fitness Access Only  
 Facility open for AF Fitness testing 30 minutes prior to test

**POLAR PARADISE POOL** (\$3) • 384.1302 • Bldg. 690  
*For pool operations and program times, visit*  
*JBERLIFE.COM/PolarParadisePool*

## FAMILY

**CHILD DEVELOPMENT CENTERS** (CDC)  
 DENALI CENTER • 552.8304 • Bldg. 7377  
 KATMAI CENTER • 552.2697 / 5113 • Bldg. 7181  
 SITKA CENTER • 552.6403 • Bldg. 6376  
 TALKIETNA CENTER • 384.0686 • Bldg. 11

All CDC's  
 Family Days  
 & Federal Holidays  
 Mon – Fri: Closed  
 6 a.m. – 5:30 p.m.

**FAMILY CHILD CARE** (FCC) • 552.3995 • Bldg. 5091  
 Mon – Fri  
 Walk ins: 8 a.m. – 11 a.m.  
 By appointments: 11 a.m. – 5 p.m.  
 Family Days  
 & Federal Holidays  
 Closed

**SCHOOL AGE CENTERS**  
 ILLA • 384.1068 • Bldg. 36100  
 School Year hours (17 Aug – 20 May)  
 Mon-Fri: 6 – 9:30 a.m./3-5:30 p.m.  
 KETCHIKAN • 552.5091 • Bldg. 7163  
 School Year hours (17 Aug – 20 May)  
 Mon-Fri: 6 – 9:30 a.m./3-5:30 p.m.

All School Age Centers  
 Family Days  
 & Federal Holidays  
 Closed

**SCHOOL LIAISON SERVICES** • 384.7500/1505 • Bldg. 600,  
 Rm. A-140  
 Mon – Fri: 7:30 a.m. – 4:30 p.m.  
 Family Days  
 & Federal Holidays  
 Closed

**YOUTH / TEEN CENTERS**  
 2 RIVERS • 384.1508 • Bldg. 297  
 School Year hours (17 Aug – 20 May)  
 Ages 13 – 18:  
 Mon – Fri: 12 – 8 p.m.  
 Ages 9 – 12:  
 Mon – Fri: 3 – 6 p.m.  
 INSTRUCTIONAL YOUTH PROGRAMS • 854.2568  
 KENNECOTT • 552.2266 • Bldg. 6104  
 Mon-Fri: 10 a.m. – 6 p.m.  
 School Year hours (17 Aug – 20 May)  
 Ages 13 – 18:  
 Mon – Fri: 12 – 8 p.m.  
 Ages 9 – 12:  
 Mon – Fri: 3 – 6 p.m.  
 Youth Sports 854.2567  
 Mon – Fri: 12 – 5 p.m.

All Youth/Teen Centers  
 Family Days  
 & Federal Holidays  
 Closed

## FOOD

**GRIZZLY GRILL** (Moose Run Golf Course) • 384.1780 • Bldg. 27000  
*Closed for the season*

**IDITAROD DFAC** • 552.3114 • Bldg. 8088  
 Mon – Fri:  
 Breakfast 6 – 9 a.m.  
 Lunch 10:30 a.m. – 1:30 p.m.  
 Dinner 4:30 – 6:30 p.m.  
 Midnight 10 p.m. – 12 a.m.  
 Sat, Sun, & Federal Holidays  
 Breakfast 6:30 – 8:30 a.m.  
 Lunch 10:30 a.m. – 1:30 p.m.  
 Dinner 4:30 – 6:30 p.m.  
 Midnight 10 p.m. – 12 a.m.  
 Daily  
 Grab & Go 6 a.m. – 6:30 p.m.

**PARADISE CAFÉ** (Arctic Oasis) • 552.0917 • Bldg. 9497  
 Mon – Fri: 11 a.m. – 2:30 p.m.  
 Family Days & Federal Holidays: Closed

**PROVISIONS ON DEMAND** (P.O.D.) • 551.0850 • Bldg. 16710  
 Mon – Fri: 6 a.m. – 8 p.m.  
 UTA Weekends: 6 a.m. – 7 p.m.

**TEN PIN** (Polar Bowl) • 770.0374 • Bldg. 7176  
 Mon – Wed: 11 a.m. – 2 p.m.  
 Thurs: 11 a.m. – 6:30 p.m.  
 Fri: 11 a.m. – 8 p.m.  
 Sat: 1 – 8 p.m.  
 Sun: 1 – 5 p.m.

**THE COMMONS** (Hillberg Ski Area) • 552.4838 • Bldg. 23400  
*Closed*

**WILDERNESS INN RESTAURANT** • 384.6048 • Bldg. 647  
 Mon. – Fri.:  
 Breakfast: 7 – 9 a.m.  
 Lunch: 11 a.m. – 1 p.m.  
 Dinner: 4:30 – 6 p.m.  
 Sat, Sun, Training Days, & Federal Holidays:  
 Brunch: 10 a.m. – 2 p.m.  
 Supper: 4 – 5:30 p.m.

## RESOURCES

**ACCOUNTING** (NAF) • 552.9769 • Bldg. 10480  
 Mon – Fri: 7:30 a.m. – 4 p.m

**EDUCATION CENTERS**  
 AIR FORCE • 552.3164 • Bldg. 4109  
 Mon – Fri: 7:30 a.m. – 4 p.m

ARMY • 384.0970 • Bldg. 7  
 Mon – Fri: 8 a.m. – 3:45 p.m

**HUMAN RESOURCES**  
 APF/ CPO • 552.3572 • Bldg. 8517  
 Mon – Fri: 7:30 a.m. – 4:30 p.m.  
 Closed 1st & 3rd Tuesday at 12 p.m.  
 NAF • 552.4563 • Bldg. 8517  
 Mon, Tue, Thurs & Fri: 7:30 a.m. – 4 p.m.  
 Wed: 7:30 a.m. – 12 p.m.

**JBER LAUNDRY** (Military Personnel Only) • 384.1902 • Bldg. 726  
 Mon – Fri: 7:00 a.m. – 3 p.m.  
**LODGING** • 552.2454 • Bldg. 7153

**MILITARY & FAMILY READINESS CENTERS**  
 ARMY COMMUNITY SERVICE • 384.1517 • Bldg. 600, Rm. A-139  
 Mon – Fri: 7:30 a.m. – 4:30 p.m.  
 Family Days & Federal Holidays: Closed  
 EXCEPTIONAL FAMILY MEMBER PROGRAM (EFMP)  
 384.0225 / 384.1517 • Bldg. 600, Rm. A-130  
 552.8840 • Bldg. 8517  
 LOG CABIN • 552.4943 • Bldg. 8535  
 Mon – Fri: 7:30 a.m. – 4:30 p.m.  
 Family Days & Federal Holidays: Closed  
 TRANSITION ASSISTANCE PROGRAM (TAP)  
 ARMY • 384.3501 • Bldg. 600, Rm. B-248  
 AIR FORCE • 552.6619 • Bldg. 8517

**MILITARY PERSONNEL SECTION** (MPS)  
 AIR FORCE • 552.8080 • Bldg. 8517  
 Mon – Fri: 8 a.m. – 3 p.m.  
 Family Days & Federal Holidays: Closed  
 ARMY • 384.2956 • Bldg. 600  
 Mon – Fri: 8 a.m. – 5 p.m.  
 Family Days & Federal Holidays: Closed

**UNITE PROGRAM** • 691.4094 • Bldg. 9497  
 Mon – Fri: 8 a.m. – 4:30 p.m.  
 Federal Holidays: Closed



For current hours of  
 operation & holiday hours,  
 please check  
**JBERLIFE.COM/Directory**

# WE ARE HIRING



## CHILD & YOUTH PROGRAM ASSISTANTS

FLEXIBLE & REGULAR POSITIONS

**STARTING PAY**  
**\$18 – \$20.40**

*First child FREE while working for Child & Youth Programs. Priority placement for JBER childcare with an additional 15% sibling DISCOUNT for every additional child, plus a 25% employee discount.*

### BENEFITS INCLUDE:

**NEW**

- Joint Military Mall & Commissary Access
- Health & Life Insurance
- Retirement Plan & 401(k)
- FREE Gym Access
- FREE Swimming Pool Access
- Education Reimbursement
- Annual & Sick Leave
- Holiday Pay

**APPLY TODAY! JOBS.JBERLIFE.COM**

For more information, call 552.3572 or 552.4563

